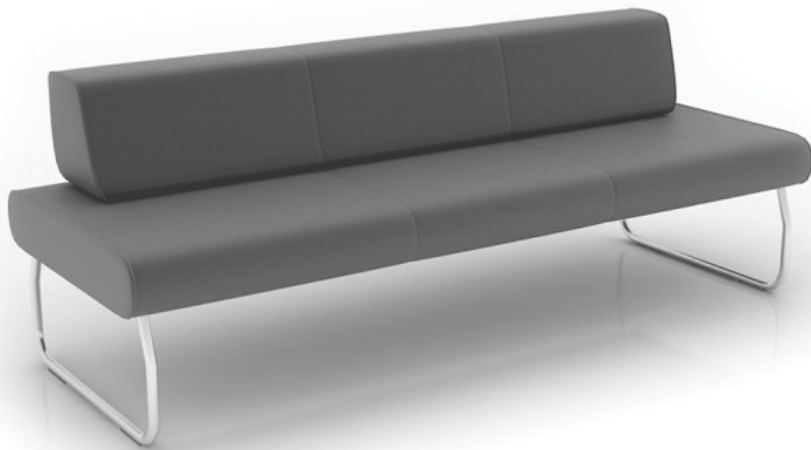


legvan

LG 403

: product card



A collection of lightweight modular sofas designed for circulation areas and public interior spaces. The wide range of modules allows you to flexibly arrange even the most difficult spaces.

design:

Product website
[website link](#)



bejot:

collection advantages

Build an interior

The Legvan is our most iconic collection of the modular sofas designed for the communication zones and public interior spaces. A wide range of the modules allows for free creating even the most difficult spaces.

Take care of good relationships

The extensive surfaces of seats and backrest give the interior a sense of calm, neutralise the tensions associated with a flow of people in the public interiors and facilitate maintaining positive relations between the people who do not know to each other.

technical data

LG 403

Standard ●
Option ○

Base

Powder painted (colors according to Bejot sampler book)

●

Additional equipment

CODE

The METAL connector to connect a set (1 set = 2 pcs)

○

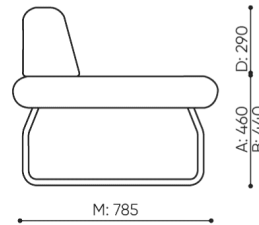
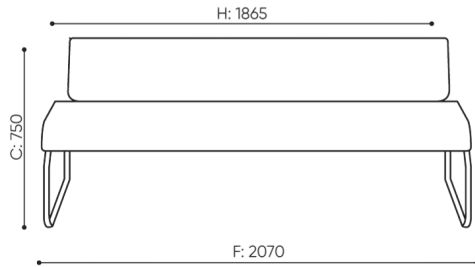
Felt glides for wooden floors and floor panels

●

Legvan components are supplied in the form of partially disassembled (they require installation of legs to the seat)

dimensions

LG 403



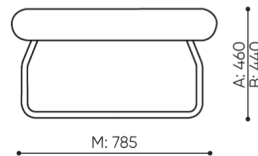
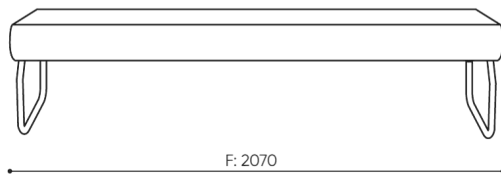
H: 450 | 1 szt.
W: 2190 | St.
L: 800 | pc.



netto 44
brutto 49

LG 403

bejot:legvan



H: 250 | 1 szt.
W: 2140 | St.
L: 840 | pc.



netto 31
brutto 35

LG 430 0

C	overall height	G	seat width	M	overall depth
D	backrest height	H	backrest width	N	seat depth

All dimensions are in [mm] and refer to basic version products. The indicated dimensions can change depending on the selected equipment package. Bejot reserves the right to change selected elements and this may slightly affect the product's dimensions. In case of any special requirements on dimensions of a given product, the afore-mentioned information should be acknowledged by the Producer. The specification does not constitute an offer within the meaning of the Civil Code. Dimensions and weights are approximate and may vary by 5%. The requirements of the standard are always met.

materials available for collection

1st price group	Bond, Fenno, Keimo, Lodge, Sawana
2nd price group	Alaska, Alpa, Charles, Charles - Studio Design, Cura, Pastel, Roccia, Valencia
3rd price group	Ally, Ally-Studio Design, Alpa-Studio Design, Blazer, Cura - Studio Design, Cyber-Studio Design, Easy - Studio Design, Oceanic, Silvertex , Silvertex - Studio Design, Synergy, Synergy - Studio Design, Valencia - Studio Design
4th price group	Oceanic-Studio Design, Remix - Studio Design
5th price group	Steelcut Trio 3-Studio Design
Leather	Leather
Metal	Metal - powder coated

bejot:legvan

