

linje

LE 100

: product card



Linje is a modular system inspired by the lines of the Copenhagen metro, blending functionality with the clean aesthetics of Scandinavian design. Its minimalist form works seamlessly with practical usability, making the collection perfect for a wide range of spaces. The system offers a high degree of flexibility, with modules that can be arranged to suit different needs and the character of the interior.

design:
Kasper Mose

Product website
[website link](#)



bejot:

collection advantages

the solution for demanding interiors

Linje meets the needs of challenging spaces and can easily fit even the most complex interior layouts. The collection was designed with educational facilities and public buildings in mind. It works perfectly in corridors, lobbies, and other common areas where both functionality and aesthetics matter.

modular flexibility

Linje is a system that allows for the creation of a wide variety of layouts, including complex configurations. Rectangular modules (for 1, 2, or 3 people) and curved modules (45° and 90°), available with or without backrests, offer complete flexibility in design. Additionally, connecting surfaces expand the functionality of the system, making it easy to adapt to different spaces and user needs.

comfort in use

Linje furniture is crafted with carefully selected foams of varying densities, providing firm support without compromising on comfort. The seating stays comfortable whether for a brief meeting or extended use.

technical data

LE 100

Standard ●
Option ○

Base

Powder coated (colors according to the Bejot sampler) ●

Mediaport

Mediaport PIX with 1 socket: 230V

RE1V ○

Mediaport PIX with 1 socket: USB A + C

RE1AC ○

Feet

Feet for soft floor

TK ●

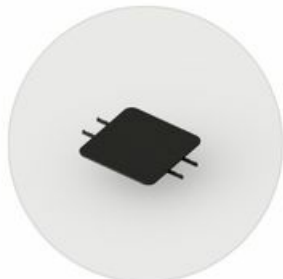
Felt feet for hard floor

TF ○

Connector



LE LI



LE L3 TB



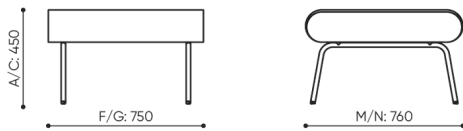
LE LC TB 45



LE LC TB 90

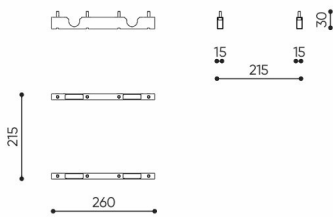
dimensions

LE 100

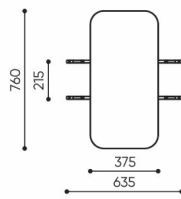


LE 100

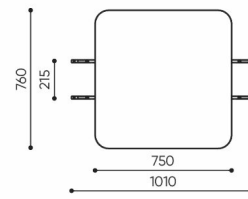
bejot:linje



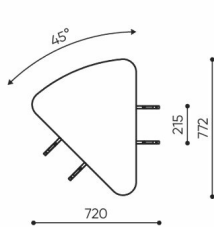
LE L1



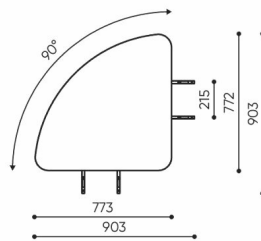
LE L2 TB



LE L3 TB



LE LC TB 45



LE LC TB 90

C overall height
D backrest height

G seat width
H backrest width

M overall depth
N seat depth

All dimensions are in [mm] and refer to basic version products. The indicated dimensions can change depending on the selected equipment package. Bejot reserves the right to change selected elements and this may slightly affect the product's dimensions. In case of any special requirements on dimensions of a given product, the afore-mentioned information should be acknowledged by the Producer. The specification does not constitute an offer within the meaning of the Civil Code. Dimensions and weights are approximate and may vary by 5%. The requirements of the standard are always met.

materials available for collection

1st price group	Bond, Fenno, Keimo, Lodge
2nd price group	Alaska, Alpa, Charles, Charles - Studio Design, Cura, Pastel, Roccia, Valencia
3rd price group	Ally, Ally-Studio Design, Alpa-Studio Design, Blazer, Cura - Studio Design, Cyber-Studio Design, Easy - Studio Design, Oceanic, Silvertex , Silvertex - Studio Design, Synergy, Synergy - Studio Design, Valencia - Studio Design
4th price group	Oceanic-Studio Design, Remix - Studio Design
5th price group	Steelcut Trio 3-Studio Design
Tabletop	Laminated tabletop
Metal	Metal - powder coated



