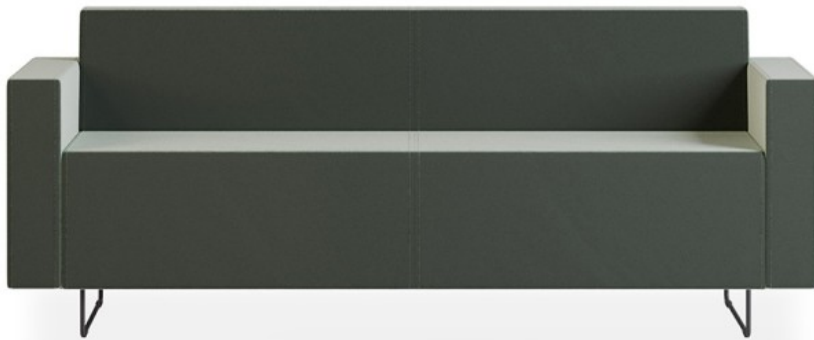


quadra

QD 422

: product card



A system of simple sofas and poufs, enabling virtually any configuration. The modules can be used to create layouts that improve the functionality of rooms and passageways, creating discrete meeting and conversation spaces.

design:
Bejot Development Team

Product website
[website link](#)



bejot:

collection advantages

individual modular system

The wide range of modular elements allows you to arrange the space in any way you like – tailored to your needs.

new possibilities

An analysis of the most common difficulties resulting from the arrangement of rooms, such as the location of columns, niches, load-bearing constructions and sloping ceilings, has made it possible to create a universal collection to fit into any space.

technical data

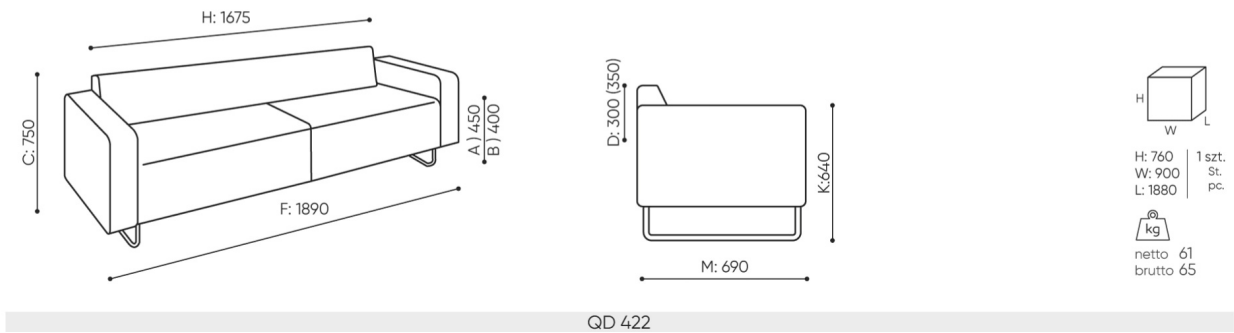
QD 422

Standard ●
Option ○

Base		
Powder painted (colors according to the Bejot sampler book)		●
Chrome		○
Slides		
Glides for ceramic floors, concrete and carpets	PK	●
Felt glides for wooden floors and floor panels	PF	○
Additional equipment		
The seat connector to connect two seats (set)	L-PQ	○
U-type independent connector for connecting 2 seats or 2 seats with walls (set)	L-U	○
Mediaport: 1 voltage socket 230V (type E-Poland/ France or type F-Germany, or type G-Great Britain) + 2 x USB chargers	[type]2VCC	○
Mediaport: 2 voltage sockets 230V (type E-Poland/ France or type F-Germany, or type G-Great Britain)	[type]2VV	○

dimensions

QD 422



C	overall height	G	seat width	M	overall depth
D	backrest height	H	backrest width	N	seat depth

All dimensions are in [mm] and refer to basic version products. The indicated dimensions can change depending on the selected equipment package. Bejot reserves the right to change selected elements and this may slightly affect the product's dimensions. In case of any special requirements on dimensions of a given product, the afore-mentioned information should be acknowledged by the Producer. The specification does not constitute an offer within the meaning of the Civil Code. Dimensions and weights are approximate and may vary by 5%. The requirements of the standard are always met.

materials available for collection

1st price group	Bond, Fenno, Keimo, Lodge, Sawana
2nd price group	Alaska, Alpa, Charles, Charles - Studio Design, Cura, Pastel, Roccia, Valencia
3rd price group	Ally, Ally-Studio Design, Alpa-Studio Design, Blazer, Cura - Studio Design, Cyber-Studio Design, Easy - Studio Design, Oceanic, Silvertex , Synergy, Synergy - Studio Design
4th price group	Oceanic-Studio Design, Remix - Studio Design
5th price group	Steelcut Trio 3-Studio Design
Tabletop	Laminated tabletop
Metal	Metal - powder coated

bejot:quadra

