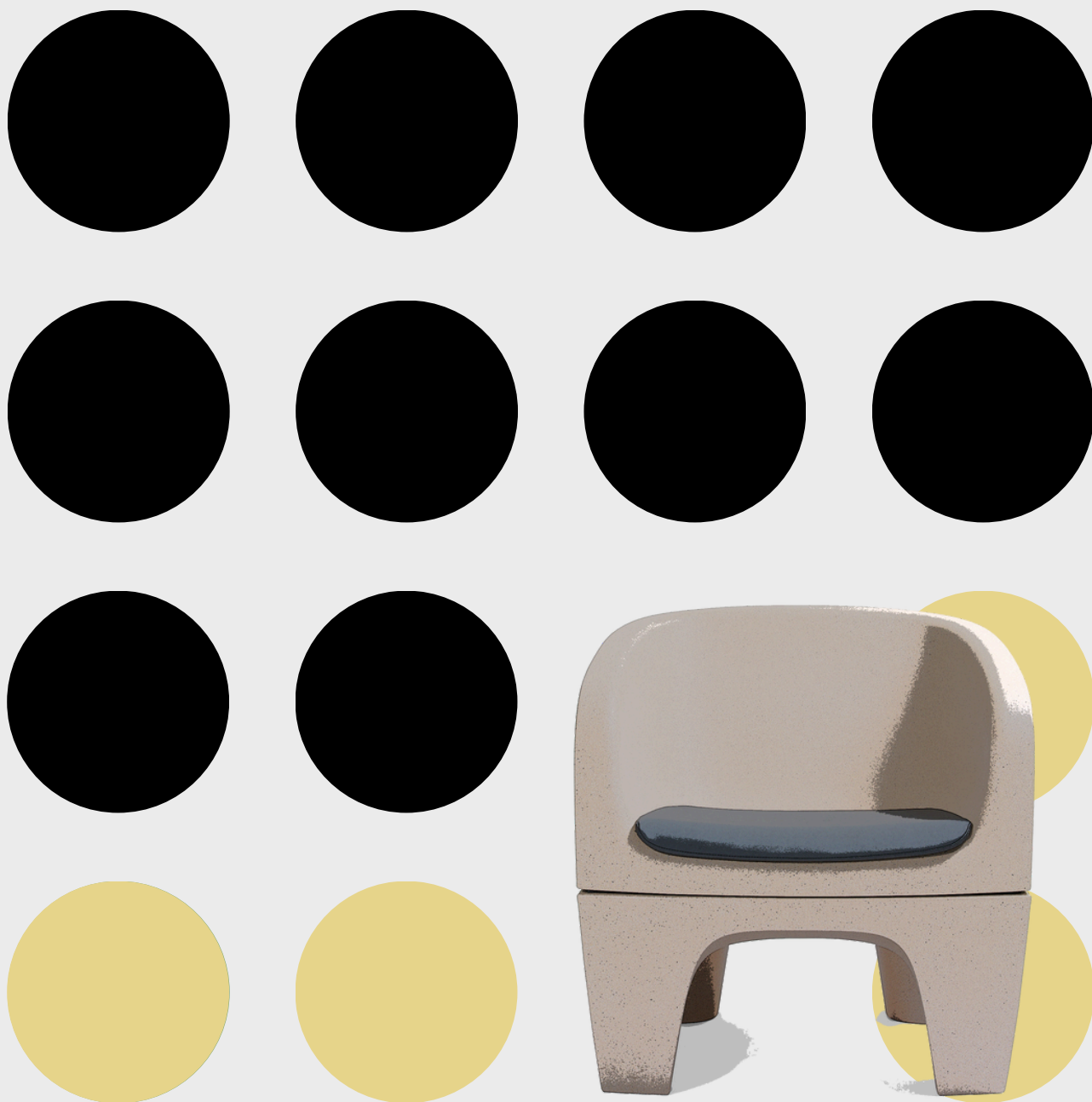



bejot:magazine

summer edition 2025



bejot:



**Summer is a time
of freshness and new
perspectives – including
how we view our
workspace.**

**In this issue of Bejot Magazine,
we explore the vision of a
modern office: inspiring,
comfortable, and refined down
to the smallest detail. We'll take
you inside summer relaxation
zones, highlight the season's
color trends, and invite you
to discover our new showroom
in London.**

04:

New Opportunities

Opening of our new
warehouse facility

06:

London Debut

KI Europe showroom
featuring our collections

10:

New Collections

Designed with people
and their comfort in mind

22:

Relax & Unwind

Furniture for chillout zones
– indoors and outdoors

28:

Trend: Warm Colors

Summer Energy
in the Workspace

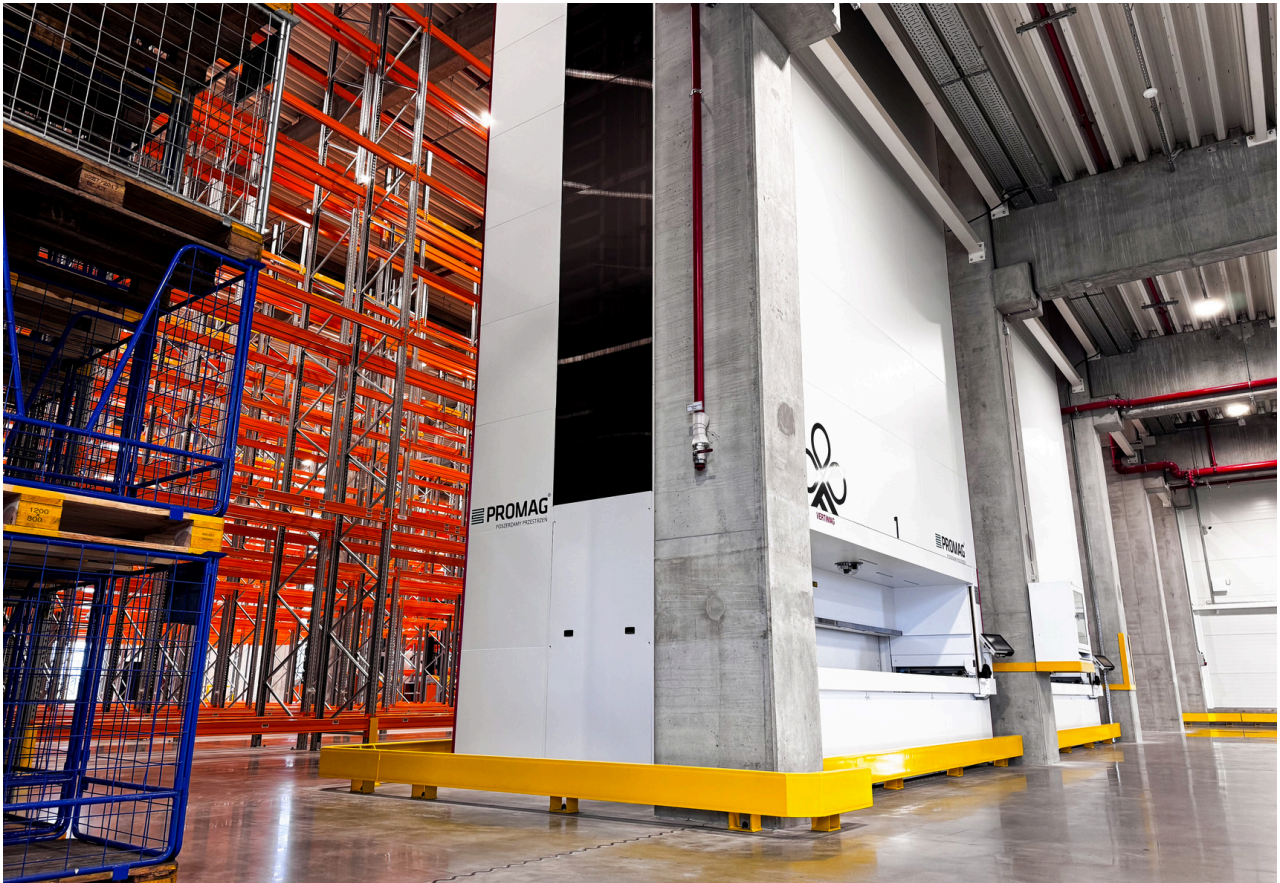
Opening of the New Warehouse

In early June 2025, our factory in Manieczki celebrated the grand opening of a new warehouse hall. The facility has been designed to enhance operational efficiency and expand the company's logistics capabilities.

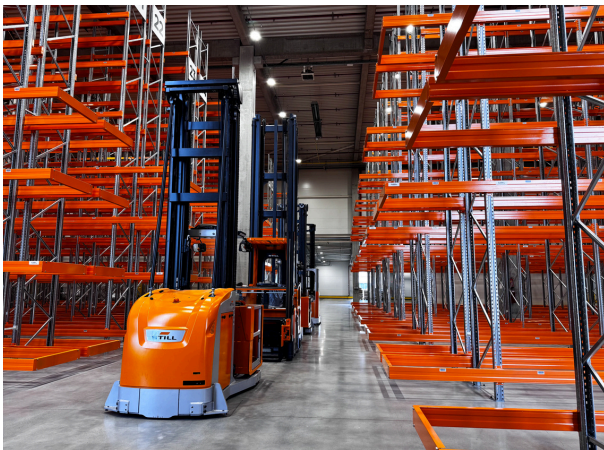
Construction of the warehouse began in December 2022 and encompassed two main sections: a high hall covering nearly 3,000 m² and a low hall of over 900 m², for a total area of approximately 3,900 m².

The new space accommodates more than 6,000 pallet positions, organized on 12-meter-high racks. This setup ensures optimal use of available volume for storage, order picking, and dispatching.





The infrastructure is further enhanced by two automated Vertimag vertical lift modules. This advanced storage system integrates the processes of storing, picking, and delivering goods, making full use of the facility's height and achieving maximum storage capacity with minimal floor space.



London Debut: KI Europe Showroom with our Collections

At this year's Clerkenwell Design Week, KI Europe – our UK partner – unveiled its brand-new showroom, spotlighting our latest collections. The two-level showroom interior is more than just an exhibition – it's an invitation to immerse yourself in the atmosphere of a modern, flexible, and comfortable office.



The showroom was designed to showcase innovative furniture solutions within carefully planned functional zones. Spread across two floors, it features products that support the concept of modern, flexible workspaces. From the moment you enter, the spotlight is on the debut Clip collection, which sets the tone for the entire space.

At the heart of the showroom is the modular Fora sofa, inviting visitors to take a moment to relax. Nearby, a cosy kitchenette offers the perfect spot for a coffee break, complete with stylish Epocc barstools. The new Jelly collection fits seamlessly into the informal meeting and lounge area.





Our acoustic solutions – including the Leaf_Pod workstation, Treehouse acoustic booths, and Diva panels – come together to create a comfortable and functional work environment.

Extending beyond the interior, the showroom opens onto a spacious outdoor terrace. Furnished with the Gummy_Bear outdoor collection, this flexible space is perfect for hosting events, casual meetings, or informal conversations in the open air.



Products on photos:

1. Epocc
2. Jelly
3. Fora + Fora coffee table + Tables:ovall
4. Clip collection
5. Leaf_pod
6. Gummy_bear



New Collections – with People in Mind

Modern work environments are undergoing a rapid transformation. Increasingly, the focus is on employee well-being – both mental and physical – as well as on the flexibility of the workspace. Our summer collection is more than just a range of new products; it is our response to the evolving needs of users and the dynamic nature of today's workplaces.





8

A Space That Connects Generations

A workplace today is so much more than just a desk and a chair. A modern office embraces zones for meetings, brainstorming, quiet focus, and informal collaboration – all tailored to the rhythm of dynamic teams. At the same time, there is a growing appreciation for the classics: designs that carry a sense of history, emotion, and timeless values. The balance between innovation and heritage creates the most inspiring work environments.

Flathouse

These acoustic pods are a flexible solution for a wide variety of spaces – from open-plan offices to dedicated focus areas. Depending on their size, they provide a quiet and comfortable environment for business calls, small meetings, video conferences, or larger creative brainstorming sessions.



9



8

Barbara

This armchair is a contemporary reimagining of a 1990s classic. While retaining its original form, it has been given a new context. Its timeless design blends comfort with aesthetics, while a carefully arranged system of foams in the seat and backrest enhances its concept of lasting comfort.



Comfort & Well:being

In modern offices, spaces for relaxation are just as important as work zones. Chillout areas, informal meeting rooms, and cozy lounges play a key role in fostering a company culture built around care for employee well-being. Comfortable sofas, soft seating, and inviting armchairs create an atmosphere that supports relaxation, regeneration, and connection.

Jelly

A functional system of modular seating designed for modern public spaces, educational facilities, and office relaxation zones. Its flexible construction allows elements to be freely combined, enabling the creation of comfortable and visually cohesive arrangements tailored to individual needs.





15

Clip

A functional system of modular seating designed for modern public spaces, educational facilities, and office relaxation zones. Its flexible construction allows elements to be freely combined, enabling the creation of comfortable and visually cohesive arrangements tailored to individual needs.



16







18



19

Fora_office

The new collection of the Fora line is designed for waiting areas and informal office meeting spaces. Soft seats and backrests ensure exceptional comfort, while the modular design allows for flexible layouts that adapt to various needs.

A well-designed office is no longer just a place for carrying out tasks – it has become a space for living, collaborating, recharging, and creating. Our latest products have been developed with this vision in mind: to support people in their daily work while fostering an environment that promotes health, balance, and productivity.

Products on photos:

- 7-8. Flathouse
- 9. Flathouse, Saar, Haali, Orte
- 10. Barbara, Tables:ovall
- 11-12. Barbara
- 13. Barbara, Tables:ovall
- 14. Jelly collecton
- 15-16. Clip collection
- 17. Flathouse, Saar, Clip, Haali
- 18. Fora_office
- 19. Fora_office

Flexibility at the Forefront

Nowoczesne miejsca pracy muszą rModern workplaces must adapt to the changing needs of teams. Open spaces, focus zones, creative rooms, and informal meeting spots are no longer optional – they are the standard. Bejot responds to this demand with modular and mobile collections that can be easily reconfigured to match the flow of tasks and the rhythm of the workday.

Haali

A blend of functionality, comfort, and light form – ideal for conference rooms, creative hubs, coworking spaces, and educational environments. Haali chairs are designed for flexibility, allowing quick and seamless adaptation to shifting needs.







23

Multiwall

A mobile wall solution perfect for offices, schools, and creative spaces. Featuring a dry-erase board, it provides a convenient platform for jotting down ideas, organizing thoughts, and supporting effective collaboration.

Saar:steps

Zoning is a key aspect of office design. Auditorium-style seating effectively defines collaborative areas while making optimal use of both horizontal and vertical space – often with the added benefit of built-in storage solutions.

Products on photos:

20-22. Haali collection

23-24. Saar:steps, Multiwall



24

Relax & Unwind – Chillout Furniture

With summer comes a greater need to pause and recharge – not only during vacations but also in our everyday work environment. More and more companies are intentionally creating relaxation zones in their offices, spaces that foster regeneration, creativity, and overall well-being. In summer, it's worth embracing lightness – both literally and figuratively.

Spaces for Unwinding

Sometimes, just a few thoughtful elements are enough to create a comfortable space for relaxation or casual conversation.

Lightweight armchairs, soft poufs, greenery, and natural light – these are simple yet effective ingredients of a summer chillout zone.

Above all, office relaxation spaces should provide comfort and a sense of ease – places where you can take a break, recharge, and spark creativity. Collections like Clip and Flos, with their lightweight and inviting forms, work perfectly here, as do modular systems designed for flexible spaces, such as Fora or Jelly.



25



Relaxation in Motion

Movement can also play a vital role – gentle rocking encourages relaxation, reduces tension, and stimulates the mind. That's why swing seats like Social_swing or rocking chairs and loungers such as Ox:co and Vieni are ideal for chillout zones.



Products on photos:

- 25. Fora, Gummy_bear
- 26. Clip, Tables:ovall
- 27. Vieni:soft
- 28. Ox:co, Point
- 29. Social_swing



Outdoor relaxation spaces are also becoming increasingly popular – terraces, patios, or green courtyards that, in summer, naturally extend the office environment.

This is where the Gummy_bear collection truly shines – furniture with soft, organic forms and high weather resistance. Made of durable material using rotomoulding technology, these pieces invite relaxation and help create a casual, friendly atmosphere.

Products on photos:

30–31. Gummy_bear
32. Fora collection







Summer Energy in the Workspace

Summer is the perfect time to refresh the office with new colors that can positively influence mood and work efficiency. Exploring seasonal color palettes and practical ways to apply them across different office zones can help create a space full of energy and balance.



Colors have a powerful impact on how we feel and perceive our surroundings. In the office, carefully chosen hues can not only lift spirits but also enhance focus and creativity.

Color Trends

This season, bright, natural, and energetic shades take center stage. Pastel blues and greens blend harmoniously with warm, rusty reds and coral tones. These colors perfectly align with modern trends that emphasize harmony, a connection to nature, and positive emotions.





Relaxation areas are best designed with cooler, calming colors like green or blue, which encourage tranquility, relaxation, and rejuvenation. These hues foster a peaceful, balanced atmosphere that supports effective rest while also inspiring creativity.



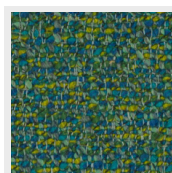
35



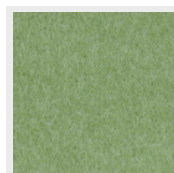
36



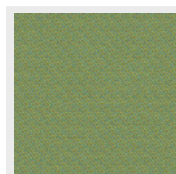
Fenno FN015



Alaska AS004



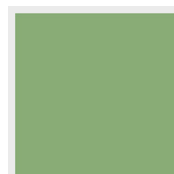
Hush HS859



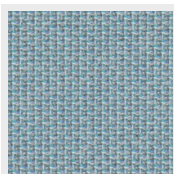
Ally AL242



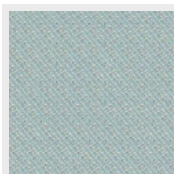
Blazer CUZ53



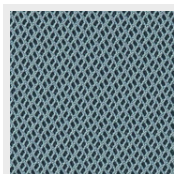
RAL 6021 S



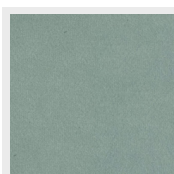
Cyber CY2401



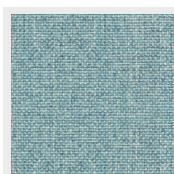
Ally AL430



Rhythm RH651



Charles CH038



Roccia RC651



RAL 6034 S

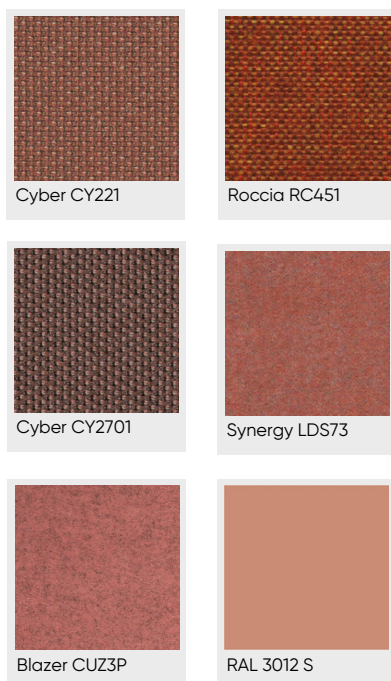








Energizing colors such as muted reds and coral shades work well in creative spaces, stimulating motivation and action.







42

Upholstered furniture is an excellent way to introduce summer tones into the workspace. With a wide range of fabrics and shades available, it's easy to tailor pieces to the character of the interior and the needs of users.



43



44

Products on photos:

- 33. Epocc_lounge
- 34. Hens
- 35. Jelly
- 36. Booi
- 37. Epocc_lounge
- 38. Leaf_pod
- 39. Fora_care
- 40. Flos
- 41. Clip collection
- 42. Treehouse
- 43. Barbara
- 44. Fora_care, Tables:ovall

bejot:

www.bejot.eu

Bejot sp. z o.o., ul. Wybickiego 2A, Manieczki, 63-112 Brodnica k. Poznania
tel.: +48 61 641 59 00, e-mail: export@bejot.eu