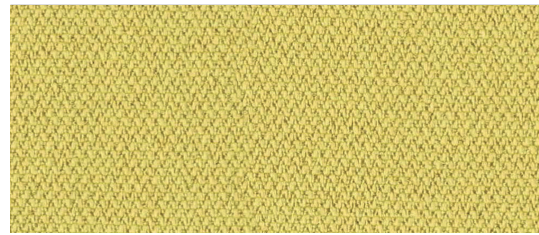


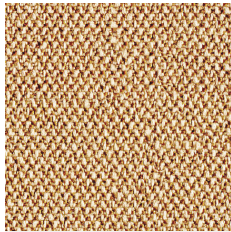
CSE30



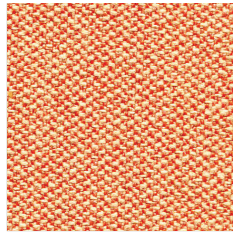
CSE01



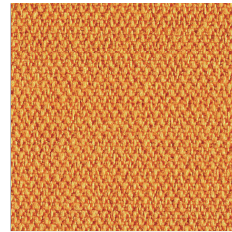
CSE03



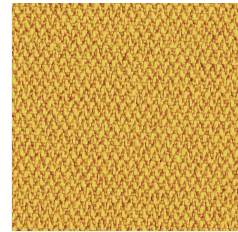
CSE31



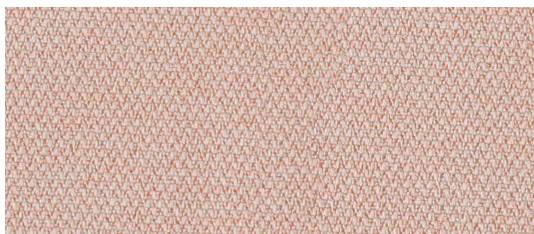
CSE25



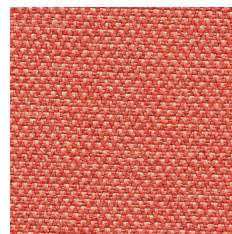
CSE27



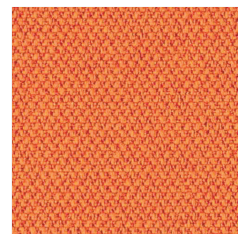
CSE32



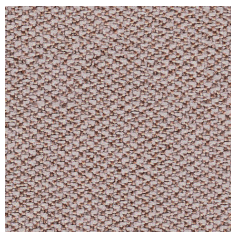
CSE19



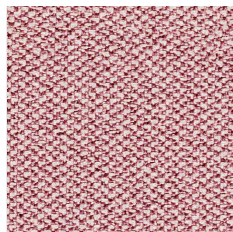
CSE26



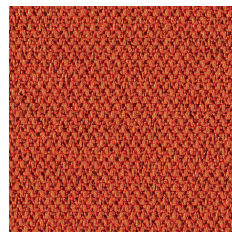
CSE05



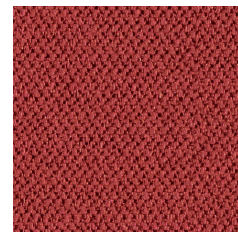
CSE23



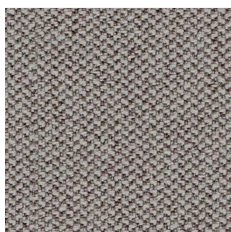
CSE24



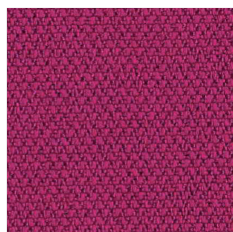
CSE29



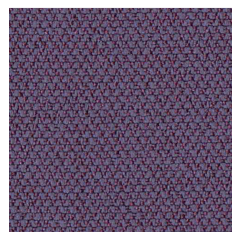
CSE28



CSE02



CSE17



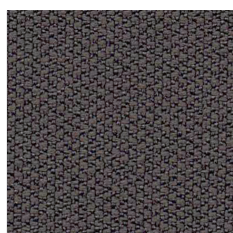
CSE09



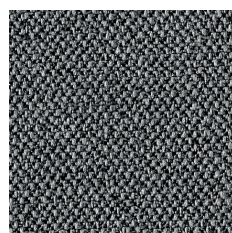
CSE06



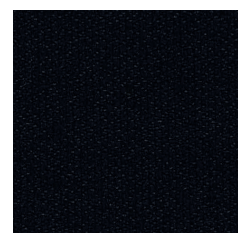
CSE13



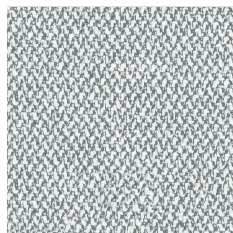
CSE21



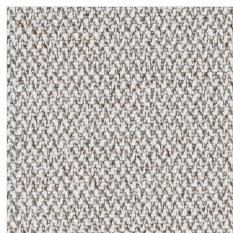
CSE44



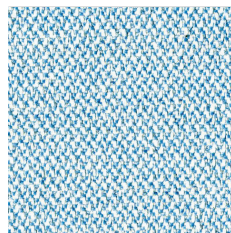
CSE14



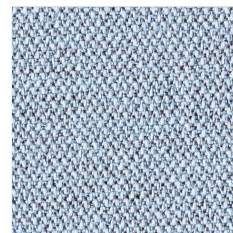
CSE46



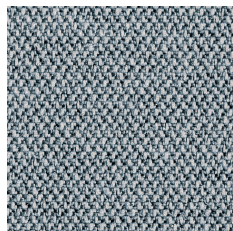
CSE41



CSE38



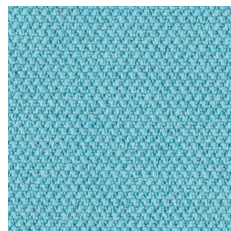
CSE39



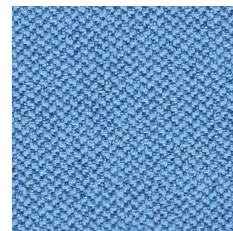
CSE43



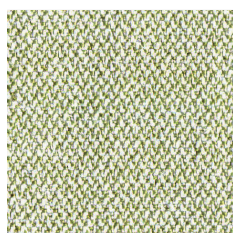
CSE11



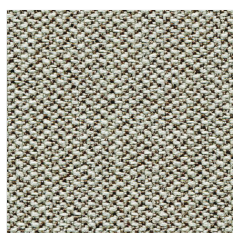
CSE20



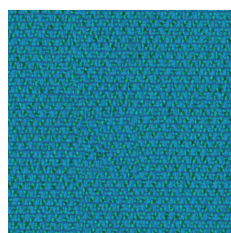
CSE08



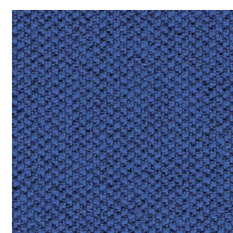
CSE33



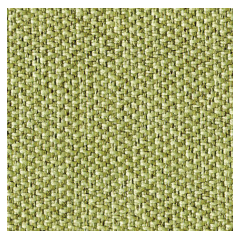
CSE45



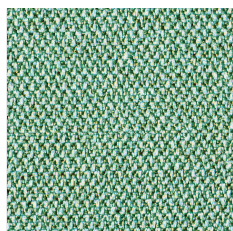
CSE10



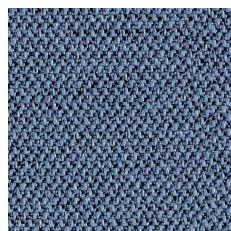
CSE12



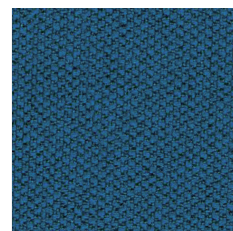
CSE34



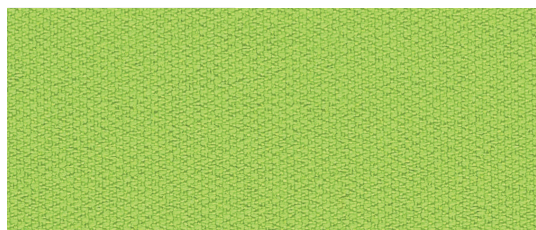
CSE36



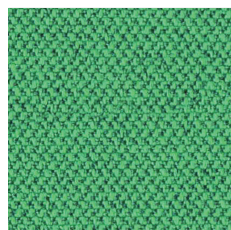
CSE42



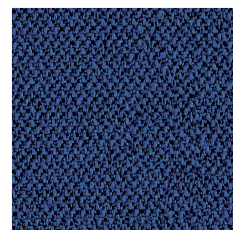
CSE15



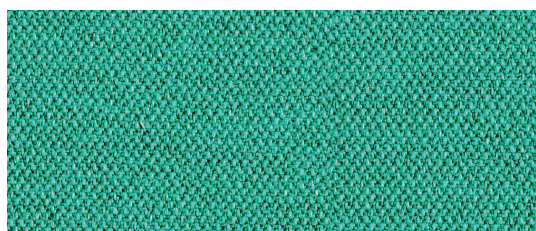
CSE07



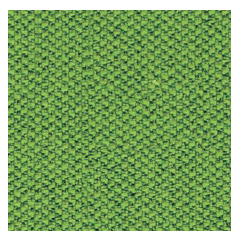
CSE18



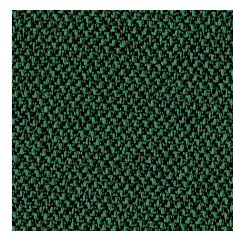
CSE40



CSE37



CSE16



CSE35

pl:

Skład

100% poliester

Waga

320 g/m² ± 5%

Szerokość rolki

140 cm

Odporność na ścieranie

≥100 000 cykli Martindale'a
(BS EN ISO 12947-2:2016)

Odporność na światło

5 (ISO 105-B02)

Odporność koloru na tarcie

Mokre: 4 (ISO 105-X12)

Suche: 4 (ISO 105-X12)

Certyfikaty trudnopalności

- EN 1021-1:2014
- EN 1021-2:2014
- BS 7176 Low Hazard

Czyszczenie

Odkurzaj regularnie. Przetrzyj wilgotną szmatką z wodą i mydłem lub użyj odpowiedniego szamponu do tapicerki. Dla lepszego czyszczenia użyj pary, wybielacza, alkoholu lub profesjonalnego czyszczenia chemicznego. Można prać w 60°C.

Dopuszcza się występowanie różnic odcieni pomiędzy poszczególnymi partiami produkcyjnymi.

de:

Zusammensetzung

100% polyester

Gewicht

320 g/m² ± 5%

Rollenbreite

140 cm

Scheuerfestigkeit

≥100 000 Zyklen Martindale
(BS EN ISO 12947-2:2016)

Lichtechtheit

5 (ISO 105-B02)

Reibechtheit

Nass: 4 (ISO 105-X12)

Trocken: 4 (ISO 105-X12)

Feuersicherung

- EN 1021-1:2014
- EN 1021-2:2014
- BS 7176 Low Hazard

Reinigung

Regelmässig staubsaugen. Dazu mit einem feuchten Tuch abwischen, oder mit einem speziellen Polsterschaum behandeln. Verwenden Sie für eine gründlichere Reinigung Dampf, Bleichmittel, Alkohol oder eine professionelle chemische Reinigung. Washbar bis 60°C.

Farbtonunterschiede zwischen einzelnen Produktionschargen sind zulässig.

en:

Composition

100% polyester

Weight

320 g/m² ± 5%

Roll width

140 cm

Abrasion resistance

≥100 000 Martindale cycles
(BS EN ISO 12947-2:2016)

Light fastness

5 (ISO 105-B02)

Fastness to rubbing

Wet: 4 (ISO 105-X12)

Dry: 4 (ISO 105-X12)

Flammability

- EN 1021-1:2014
- EN 1021-2:2014
- BS 7176 Low Hazard

Cleaning

Vacuum regularly. Wipe with a damp cloth using soap and water or use proprietary upholstery shampoo. For deeper cleaning use steam, bleach, alcohol or professionally dry clean. Can be washed at 60°C.

Shade differences between individual production batches are allowed.