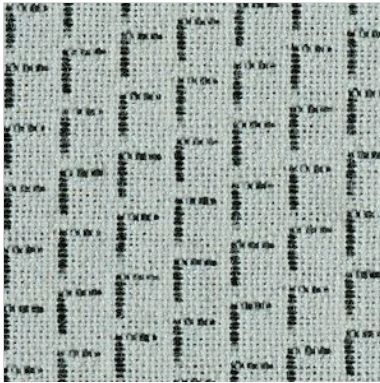
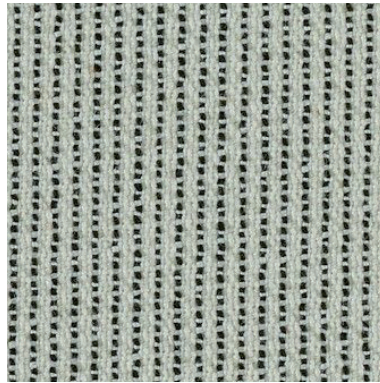


heritage SD

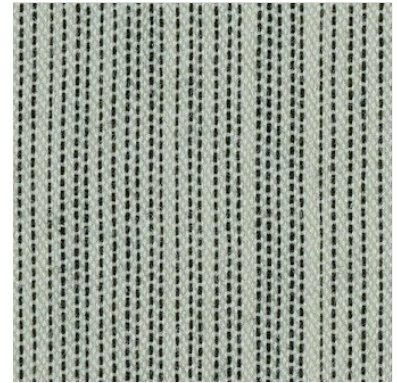
edition: 02.2021
price group: 4



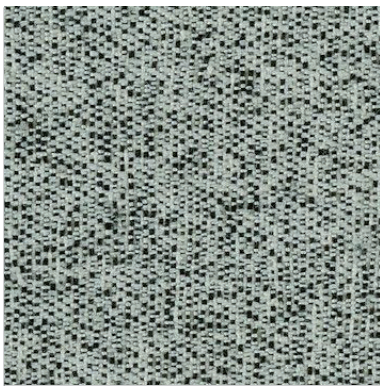
TUCK | HRT2T



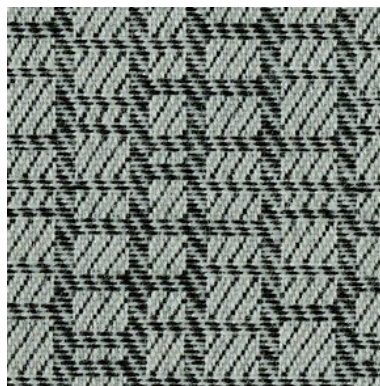
TAILOR | HRT20



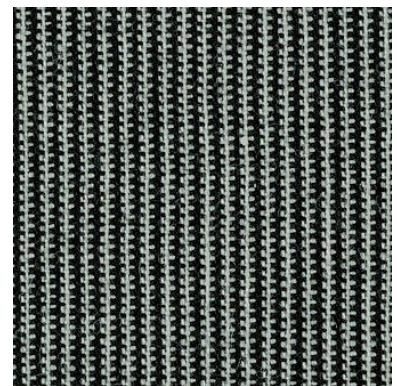
STICH | HRS20



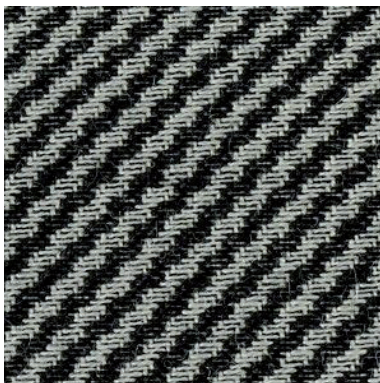
BLEND | HRB20



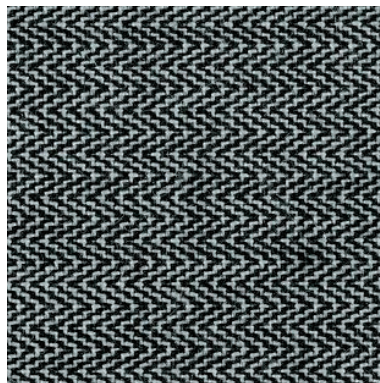
DOBBY | GRD86



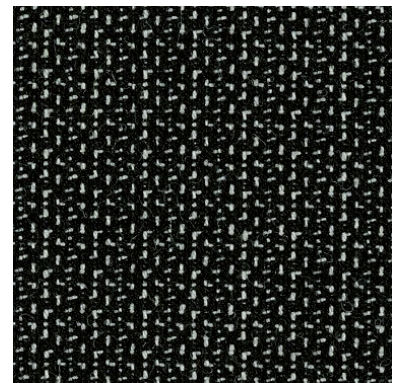
MEDIO | HRM86



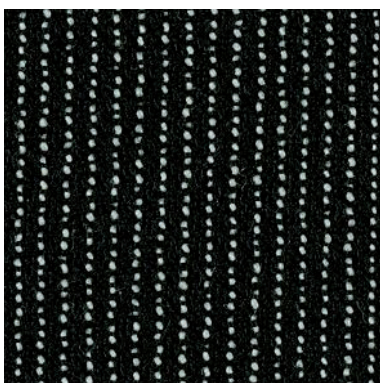
PELO | HRP86



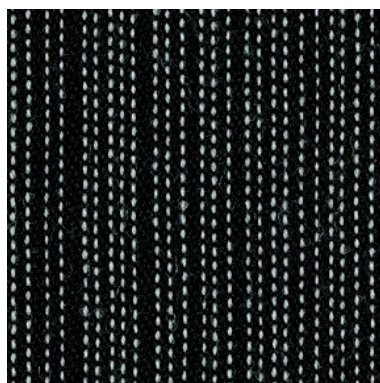
BOTANY | HRB86



KIPPER | HRK88



TAILOR | HRT88



STICH | HRS89



TINT | HRT8T

Zdjęcia kolorów produktów na stronie,
mogą odbiegać od rzeczywistych.

Colours of products presented on this
website may differ from the actual colours.

Die Bildern der Farben der Produkte auf der
Website können vom Original abweichen.

pl:

Skład

- Dobby, Stitch, Tailor, Tint, Tuck:
85% wełna, 15% poliamid
- Blend:
90% wełna, 10% poliamid
- Kipper:
88% wełna, 12% poliamid
- Botany, Medio, Pelo:
89% wełna, 11% poliamid

Waga

310 g/m² – 370 g/m²

Szerokość rolki

150 cm

Odporność na ścieranie

cykli Martindale'a
(EN ISO 12947-2)

- Dobby, Tint:
140 000
- Botany, Stitch:
130 000
- Pelo, Medio, Tuck:
100 000
- Kipper, Tailor:
60 000
- Blend:
45 000

Odporność na światło

5–7 (BS EN ISO 105:B02:2014–BS6)

Odporność koloru na tarcie

Mokre: 3–4 (BS EN ISO 105–X12:2016)
Suche: 4 (BS EN ISO 105–X12:2015)

Certyfikaty trudnopalności

- EN 1021-1:2014
- EN 1021-2:2014
- BS 6852 Crib 5
- IMO FTP Code 2010:Part 8

Czyszczenie



Dopuszcza się występowanie różnic odcieni
pomiędzy poszczególnymi partiami produkcyjnymi.

de:

Zusammensetzung

- Dobby, Stitch, Tailor, Tint, Tuck:
85% Schurwolle, 15% Polyamid
- Blend:
90% Schurwolle, 10% Polyamid
- Kipper:
88% Schurwolle, 12% Polyamid
- Botany, Medio, Pelo:
89% Schurwolle, 11% Polyamid

Gewicht

310 g/m² – 370 g/m²

Rollenbreite

150 cm

Scheuerfestigkeit

Zyklen Martindale
(EN ISO 12947-2)

- Dobby, Tint:
≥ 140 000
- Botany, Stitch:
≥ 130 000
- Pelo, Medio, Tuck:
≥ 100 000
- Kipper, Tailor:
≥ 60 000
- Blend:
≥ 45 000

Lichtechtheit

5–7 (BS EN ISO 105:B02:2014–BS6)

Reibechtheit

Nass: 3–4 (BS EN ISO 105–X12:2016)
Trocken: 4 (BS EN ISO 105–X12:2015)

Feuersicherung

- EN 1021-1:2014
- EN 1021-2:2014
- BS 6852 Crib 5
- IMO FTP Code 2010:Part 8

Reinigung



Farbtonunterschiede zwischen einzelnen
Produktionschargen sind zulässig.

en:

Composition

- Dobby, Stitch, Tailor, Tint, Tuck:
85% wool, 15% polyamide
- Blend:
90% wool, 10% polyamide
- Kipper:
88% wool, 12% polyamide
- Botany, Medio, Pelo:
89% wool, 11% polyamide

Weight

310 g/m² – 370 g/m²

Roll width

150 cm

Abrasion resistance

Martindale cycles
(EN ISO 12947-2)

- Dobby, Tint:
≥ 140 000
- Botany, Stitch:
≥ 130 000
- Pelo, Medio, Tuck:
≥ 100 000
- Kipper, Tailor:
≥ 60 000
- Blend:
≥ 45 000

Light fastness

5–7 (BS EN ISO 105:B02:2014–BS6)

Fastness to rubbing

Wet: 3–4 (BS EN ISO 105–X12:2016)
Dry: 4 (BS EN ISO 105–X12:2015)

Flammability

- EN 1021-1:2014
- EN 1021-2:2014
- BS 6852 Crib 5
- IMO FTP Code 2010:Part 8

Cleaning



Shade differences between individual
production batches are allowed.