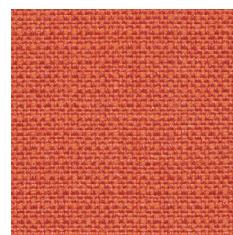




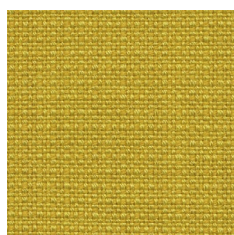
CS 033



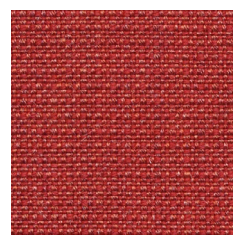
CS 430



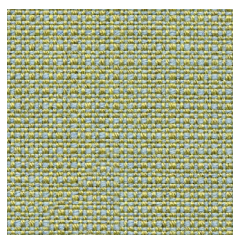
CS 032



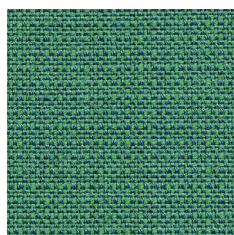
CS 421



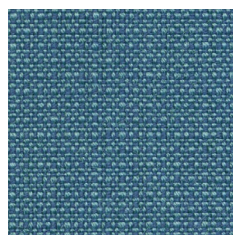
CS 432



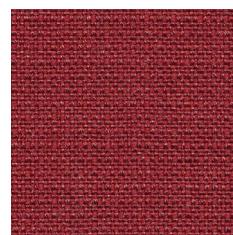
CS 201



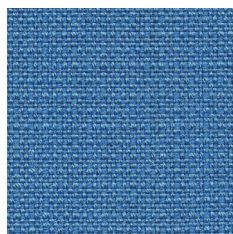
CS 605



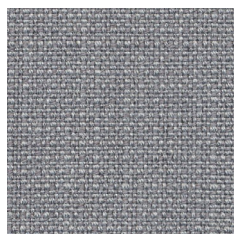
CS 602



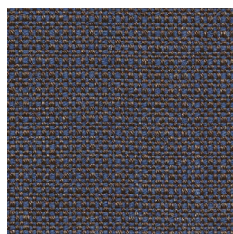
CS 441



CS 601



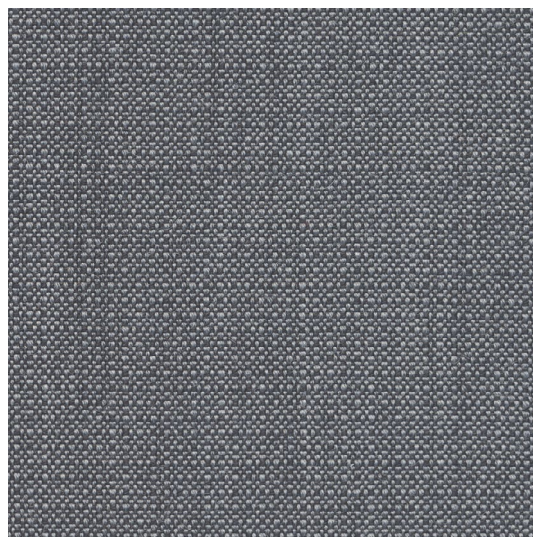
CS 021



CS 125



CS 013



CS 022

**PL****Skład**

93% Wełna, 7% Poliamid

**Waga**

328 g/m<sup>2</sup>

**Szerokość rolki**

140 cm

**Odporność na ścieranie**

200.000 cykli Martindale  
(BS EN ISO 12947-2:1998 AC 2008)

**Pilling**

4-5 (BS EN ISO 12945-2:2000)

**Odporność na światło**

6-7 (ISO 105-B02)

**Odporność koloru na tarcie**

Mokre: 5 (UNI EN ISO 105-X12):2016  
Suche: 5 (UNI EN ISO 105-X12):2016

**Certyfikaty trudnopalności**

-BS EN 1021 1&2:2014  
-BS:5852 Part 1:1979  
-UNI 9175: 2010 Class 1 IM

**Inne**

-IMO Res. A.652 (16)  
-IMO Res.MSC 61 (67) Annex 1, Part 8  
-IMO Res.MSC 307 (88) Annex 1, Part 8

**DE****Zusammensetzung**

93% Schurwolle, 7% Poliamid

**Gewicht**

328 g/m<sup>2</sup>

**Rollenbreite**

140 cm

**Scheuerfestigkeit**

200.000 Zyklen Martindale  
(BS EN ISO 12947-2:1998 AC 2008)

**Pilling**

4-5 (BS EN ISO 12945-2:2000)

**Lichtechtheit**

6-7 (ISO 105-B02)

**Reibechtheit**

Nass: 4 (UNI EN ISO 105-X12):2016  
Trocken: 5 (UNI EN ISO 105-X12):2016

**Feuersicherung**

-BS EN 1021 1&2:2014  
-BS:5852 Part 1:1979  
-UNI 9175: 2010 Class 1 IM

**Andere**

-IMO Res. A.652 (16)  
-IMO Res.MSC 61 (67) Annex 1, Part 8  
-IMO Res.MSC 307 (88) Annex 1, Part 8

**EN****Composition**

93% Wool, 7% Polyamid

**Weight**

328 g/m<sup>2</sup>

**Roll width**

140 cm

**Abrasion Resistance**

200.000 Martindale cycles  
(BS EN ISO 12947-2:1998 AC 2008)

**Pilling**

4-5 (BS EN ISO 12945-2:2000)

**Light Fastness**

6-7 (ISO 105-B02)

**Fastness to Rubbing**

Wet: 4 (UNI EN ISO 105-X12):2016  
Dry: 5 (UNI EN ISO 105-X12):2016

**Flammability**

-BS EN 1021 1&2:2014  
-BS:5852 Part 1:1979  
-UNI 9175: 2010 Class 1 IM

**Other**

-IMO Res. A.652 (16)  
-IMO Res.MSC 61 (67) Annex 1, Part 8  
-IMO Res.MSC 307 (88) Annex 1, Part 8

